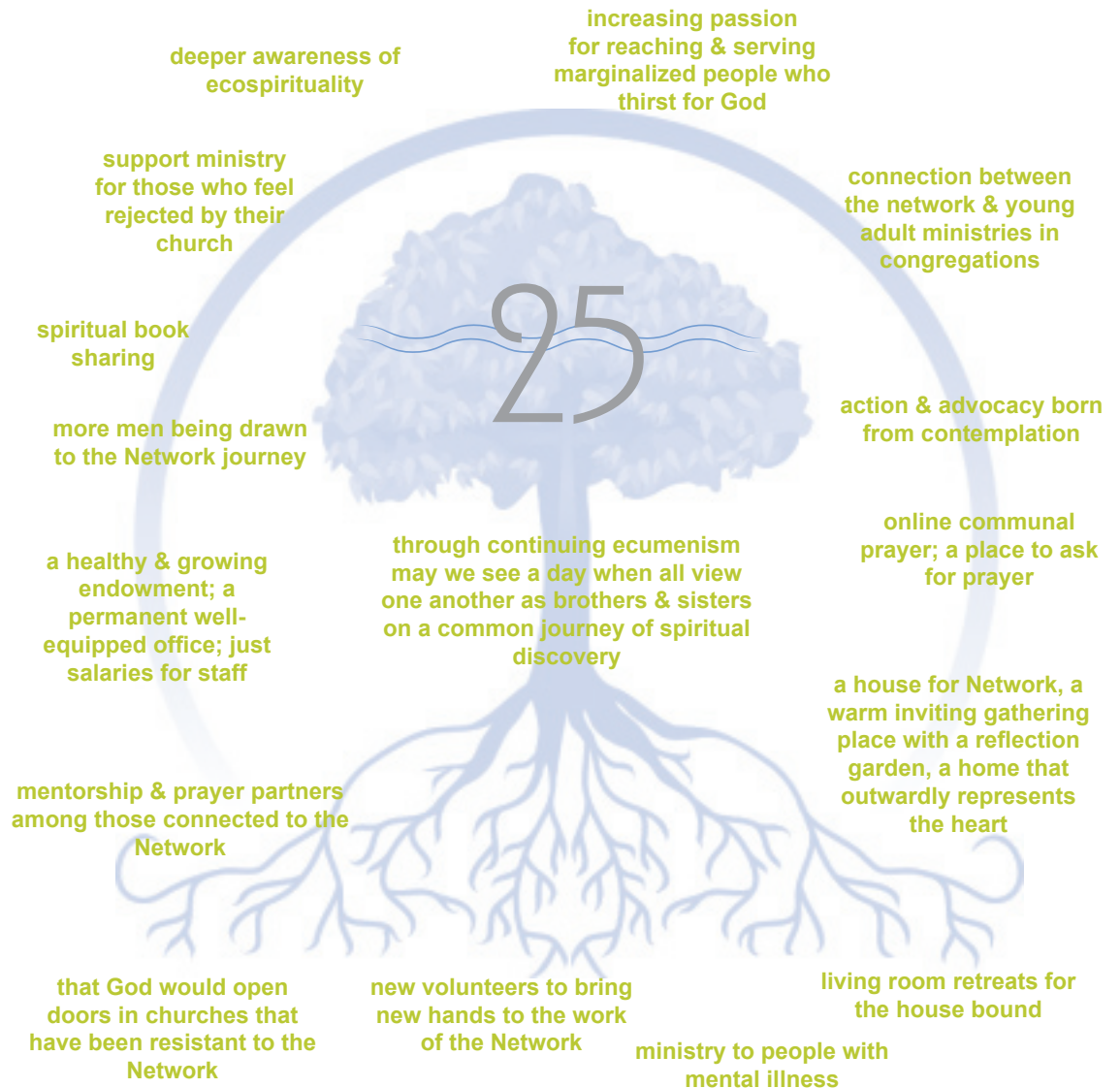




### CELEBRATING OUR CONTEMPLATIVE ROOTS

Some seeds for the future of the Spirituality Network, planted by participants at the annual meeting kicking off the 25th anniversary year:



Patricia J. Gibboney  
Executive Director  
pjgibbo@aol.com

Carol Ann Spencer, OP  
Wellstreams Coordinator  
carol.spencer1@juno.com  
www.wellstreams  
columbus.org

Amanda Stone Cushing  
Program Coordinator  
ascushing4@hotmail.com

Sandra Kerka  
Newsletter Editor/  
Bookkeeper  
skerka@insight.rr.com

The Spirituality Network,  
Inc. provides:

- Education and formation through the Wellstreams Training Program
- Spiritual direction referrals for groups and individuals
- Retreat planning and facilitation
- Programs to foster the spiritual life
- Connection to a variety of spirituality resources in central Ohio

As an ecumenical organization, the Spirituality Network serves people both within and outside of religious institutions.

SPIRITUALITY NETWORK  
444 E Broad St  
Columbus OH 43215  
Phone 614.228.8867  
Fax 614.228.8975  
spiritnetwk@hotmail.com  
spiritualitynetwork.org

Twitter: www.twitter.com/spiritnetwk  
Facebook: www.facebook.com; search "Spirituality Network, Columbus, Ohio"

### INSIDE

2	NETWORK EVENTS	7	FROM THE EXECUTIVE DIRECTOR
4	REFLECTIONS FROM THE CHAIR	9	DEVELOPMENT REPORT
5	WELLSTREAMS	10	COMMUNITY EVENTS
6	ALWAYS WE BEGIN AGAIN	11	ONGOING GROUPS
		12	BOOK REVIEW

# SPIRITUALITY NETWORK EVENTS

PREREGISTRATION IS REQUIRED. SPACE IS LIMITED. To register, send name, phone, e-mail, and name of program to Spirituality Network, ATTN: PROGRAMS, 444 E Broad St, Columbus, OH 43215; call 614/228-8867; or e-mail spiritnetwk@hotmail.com. Registration fee may be paid by cash, check, or credit card (MasterCard, Visa, Discover).

## AUTUMN WISDOM: A MINI-RETREAT FOR PEOPLE IN MINISTRY

November 10, 2011, 9am-1pm, facilitated by Dan Schleppli at the Martin de Porres Center  
\$35 PREPAID by October 28; \$50 after. PREREGISTRATION REQUIRED (see above).

Clergy ~ Chaplains ~ Spiritual Directors ~ Hospice Volunteers: If you are in any kind of caring ministry, join us as we listen together for the wisdom of autumn. The season teaches us about letting go, resting, and preparing for the coming winter if we are willing to take time to listen.

This mini-retreat will include community prayer, discussion, silent reflection, and individual meditation time. The grounds of St. Mary of the Springs offer lovely outdoor areas for taking a walk, weather permitting.

We will begin with coffee and fellowship at 9am; program begins at 9:30.

## DISCOVERING THE SACRED IN THE ORDINARY

a busy person's directed retreat (in 3 parts)  
1. Tuesday, September 27, 2011, 7-8:30pm  
2. Three individually scheduled spiritual direction sessions  
3. Tuesday, October 18, 7-8:30pm

Tuesday sessions at the Spirituality Network. \$75 PREPAID by September 24; \$90 after. Space is limited. PREREGISTRATION REQUIRED (see above).

When you think of a retreat, you probably think of getting away from it all, at a retreat center or a cabin in the woods. Most of us don't have the luxury of time to actually go away, even for a weekend. This retreat does not require you to pack your bags and travel anywhere. It takes place within the ordinary busy-ness of your daily life. It is a simple idea: over the course of 3 weeks, you make a commitment to yourself and to God for special time each day for prayer, reflection, and silence.

Three times during the retreat period you will meet — for about an hour — with an assigned spiritual director to reflect on your daily practice of prayer and the ways in which you are (or perhaps are not) noticing the presence of God in your daily life. This is an excellent opportunity to get a "taste" of how spiritual direction might enrich your spiritual journey.

## THE GIFT OF CONTEMPLATIVE PRAYER: SEEING WITH THE EYES OF LOVE: A FOUR-PART SERIES

Mondays, October 3-24, 2011, 7-9pm, led by Dr. Jan Hoffman and Rev. Margot Connor at the Spirituality Network. \$65 PREPAID by September 25; \$80 after. Book: *Everything Belongs* by Richard Rohr, \$12.\* Space is limited. PREREGISTRATION REQUIRED (see above).

*"God is always bigger than the boxes we build for God."*  
~ Richard Rohr, O.F.M.

Contemplative prayer helps us focus our full attention on the presence and love of God. Fostering deepened awareness and greater understanding in our everyday living, contemplation allows us to see broadly, trust deeply and to outgrow the smallness of "either/or" thinking.

Using Richard Rohr's *Everything Belongs*, we will explore what it means to live in the "both/and" of God's infinite love. Each of the four evenings will include prayer, teaching and discussion based on topics from the book, and suggestions for take-home exercises to help participants apply this to their daily lives.

\*If you don't already own the book, it may be purchased via preregistration by September 25.

Dr. Jan Hoffman, is a Clinical Psychologist and spiritual director. Rev. Margot Connor is Pastor of Karl Road Christian Church and spiritual director. Both are graduates of the Wellstreams Ecumenical Training Program.



# SPIRITUALITY NETWORK EVENTS

PREREGISTRATION IS REQUIRED. SPACE IS LIMITED. To register, send name, phone, e-mail, and name of program to Spirituality Network, ATTN: PROGRAMS, 444 E Broad St, Columbus, OH 43215; call 614/228-8867; or e-mail [spiritnetwk@hotmail.com](mailto:spiritnetwk@hotmail.com). Registration fee may be paid by cash, check, or credit card (MasterCard, Visa, Discover).

## RESPONDING TO THE STILL, SMALL VOICE: A PRAYER RETREAT SERIES

Package of 3: \$140 PREPAID by September 23. Individual pricing below. Space is limited. PREREGISTRATION REQUIRED (see above).

Take time to listen more deeply and respond more freely to God's still, small voice in our Prayer Retreat Series. Balanced with a mixture of experience and instruction, each retreat will offer the opportunity to explore spirituality and prayer in a contemplative environment.

*Praying through Transitions, October 8, 2011, 9am-1pm*, led by Melissa Turner-Rustin at Maple Grove United Methodist Church, 7 W. Henderson Rd. \$50 PREPAID by September 23; \$65 after. Includes refreshments and all materials.

Transitions are the source of some of our greatest life challenges. Whether the changes are chosen or simply happen, they will bring both turmoil and opportunity. Explore the contemplative approach to listening and responding to transitions that will support our movement through these challenging times.

Facilitator Melissa Turner-Rustin graduated from the Methodist Theological School in Ohio with a Master's of Divinity and Master's degree in Liturgical Arts. She is a spiritual director and retreat leader with a gift for creating prayerful environments.

*Praying with Presence, November 5, 2011, 9:30am-3:30pm*, led by Donita Harris at Church for All People, 946 Parsons Ave. \$65 PREPAID by October 25; \$80 after. Includes lunch and all materials. A portion of the registration fee will help support the ministry of the House of Hospitality, an urban retreat house on Columbus' south side, offering contemplative and social justice retreats. To learn more, visit [www.4allpeople.net](http://www.4allpeople.net).

All of the major world religions teach the practice of serving those who are in need. Although giving of your material wealth is helpful, giving of your presence is transformative—for both parties. We will explore together the practice of "being present" and being transformed in community. We will begin with prayer, discussion, and faith sharing, followed by an experience of being present through service in the first part of the day. The second part of the day will include time for individual contemplation, community discussion, and reflection.

Donita Harris is director of Community Development for All People, a Christian Lay Minister in the United Methodist Church, a spiritual director, and retreat facilitator.

*Praying in Advent: Living Lovingkindness, Living Compassion, December 3, 2011, 9:30am-1pm*, led by Katherine Murphy-Mertzlufft at Martin de Porres Center, 2330 Airport Dr. \$50 PREPAID by November 22; \$65 after. Includes refreshments and all materials.

The season of Advent is a time of preparation, inviting us to open our hearts to receive the gift of God's lovingkindness and compassion. It invites us into deeper awareness of this gift given to us and for us and to respond to our own call to become lovingkindness and compassion in the way we live our lives. We will explore this sacred call through contemplative prayer, reflection, and conversation.

Katherine Murphy Mertzlufft will lead this retreat time based on the work of Rabbi Rami Shapiro, *The Sacred Act of Lovingkindness*. Katherine is a Wellstreams graduate and a practicing spiritual director and certified Life Coach. She serves in various ministries at St. Thomas More Newman Center and is a Paulist Associate.

## SACRED FEMININE

Our cultural heritage gives us images of The Divine that are overwhelmingly masculine. How do women recognize and claim that they, too, are created in God's likeness? Join us on the second Tuesday of each month as we gather for discussion, reflection, and exploration on a variety of topics that help us to connect to uniquely feminine aspects of The Divine. Our intention is to discover more balance, create more peace, and offer more hope to our world.

**In order for us to plan accordingly, PLEASE PREREGISTER: 614/228-8867 or [spiritnetwk@hotmail.com](mailto:spiritnetwk@hotmail.com).**

October 11, November 8, December 13, 2011, 2-4pm  
Suggested donation: \$5  
Topics and facilitators TBA



# REFLECTIONS FROM THE CHAIR

## REFLECTIONS

### SPIRITUALITY NETWORK BOARD OF DIRECTORS

Alex Rodriguez, Chair  
Nationwide Insurance

Jacquelyn Dean, Secretary  
Educator, Spiritual Director

Roy Smoot, Treasurer  
PNC Bank

Elizabeth Bartley  
Spiritual Director

Rebecca Bass  
Newman Center

Rev. Mark Diemer  
Grace of God Lutheran Church

Joe Fowler  
Spiritual Director

Connie Filker Hiatt  
First Community Church

Katherine Murphy Mertzluft  
Spiritual Director

Wayne Rapp  
Rapp Productions

Maxine Shonk, OP  
Dominican Sisters of Peace

Sharon Reed  
Ohio Dominican University  
Spiritual Director to the Board

Ex-officio

Barbara Davis  
Spiritual Director  
Board Member Emeritus

Judy Smoot  
Director, Always We Begin Again

Artwork & Photo Credits:  
p. 1, Sandra Kerka  
pp. 2, 9, Sandra Torrijos/Isis  
International-Manila  
p. 5, Melvi Gelacio/Isis  
International-Manila  
p. 8 (top) Mary Ellen George,  
(middle) Rebecca Bass,  
(bottom two) Liz Kuhn  
p. 12, Justin Lowery, Creative  
Commons license

### The road less traveled?

*Two roads diverged in a yellow wood  
And sorry I could not travel both  
And be one traveler, long I stood  
And looked down one as far I could  
To where it bent in the undergrowth.*

This poem is a favorite of mine. There's something quite alluring to me about going where no one has gone before. To be the very first to experience the beauty and splendor of this amazing planet we inhabit.

As I explore new places, I wonder if any other human has stepped on the ground where I currently stand. I think about what others might think about as they view what I see. Do they focus on the same things that I do? Or do their eyes perhaps spy something I might completely overlook?

There's that little tingle that crawls up my spine as I turn a corner into uncharted territory. What will I find? Who or what will find me? That sense of discovery, although sometimes daunting, is a beacon that entices me forward.

And then, I sometimes think... in all the history of the world... certainly someone else has walked this way. Surely, I am not the first to run across this place. As Ecclesiastes says, there's nothing new under the sun.

A colleague at work might have been thinking these thoughts as she camped out West a few weeks ago.

She shared with me about a hike she took on her trip. Coming to a fork in the path, she noticed most people taking the road to the right. Being a little contrary, she took the path to the left. She was amazed at what she saw. As she viewed the primitive beauty of the landscape, she thought about the people who chose the other path and what they were missing.

On the way back, her husband persuaded her to try out the other path to see what was there. As they turned the corner, the imposing presence of Mount Rushmore came into view. Whoops!

These thoughts pour through my head as I think about embarking on my board leadership role. It's exciting, a little nerve wracking, and extremely comforting knowing the great history of the Network and the people who have built it and are continuing to build it today.

I may be inclined to take us to new places from time to time. But I also know there's a reason why the Network has been around these 25 years.

There's wisdom in each and every one of you.

I'll need your wisdom and counsel. Together, I believe the journey will be an exciting one. The traveler in Robert Frost's poem was alone. We are not.

*And that has made all the difference.*

Alex Rodriguez



## WELLSTREAMS: AN ECUMENICAL TRAINING PROGRAM IN SPIRITUAL FORMATION AND DEVELOPMENT [www.wellstreamscolumbus.org](http://www.wellstreamscolumbus.org)

### NEXT WELLSTREAMS CLASS OPEN FOR ENROLLMENT

The eighth class of Wellstreams began Phase Two (Practicum) on August 26-27.  
Registration for the next class will open on September 1, 2011.

Be sure to check out all the information at [www.wellstreamscolumbus.org](http://www.wellstreamscolumbus.org).

**The deadline for registration is April 15, 2012.** The ninth class will begin in August 2012.

### FALL WELLSTREAMS WORKSHOPS

These workshops are open to anyone who desires to grow and are ideal for persons in helping professions, lay ministers, caregivers, etc.

Please preregister by calling 614/228-8867 or via e-mail: [spiritnetwk@hotmail.com](mailto:spiritnetwk@hotmail.com).

#### CULTIVATING A LISTENING HEART

*Saturday, October 1, 2011, 9:10am-3:30pm*, Martin de Porres Center; brown bag lunch or nearby restaurant, 12:30-1:30pm; fee \$60

*"The first duty of love is to listen." ~ Paul Tillich*

An experiential workshop designed for anyone who wants to deepen relationships and personal connection with the Divine, others, and oneself through the sacred act of listening.

Have you ever asked yourself:

- Is listening really enough?
- How do you listen with your heart rather than your head?
- Is it really possible or even desirable to be a nonjudgmental presence?

Through contemplative reflection, presentation, and interactive experience we will explore the domain of heart connection, the role of compassion and emotional intelligence, and the practice of presence. Our focus will be on practical application of listening as a sacred act and the language of compassionate feeling as a spiritual practice in every day life as well as in the practice of spiritual direction.

Facilitators:

Sharon Reed, Spiritual Director and Faculty/Supervisor in Wellstreams Spiritual Direction Training Program, Licensed Professional Counselor, Dean of Student Life at Ohio Dominican University

Katherine Murphy Mertzlufft, Spiritual Director, Certified Life Coach and Compassionate Communication practitioner.

#### DEVELOPING HEALTHY BELIEFS AND VALUES

*Saturday, November 12, 2011, 9:10am-3:30pm*, Martin de Porres Center; brown bag lunch or nearby restaurant, 12:30-1:30pm; fee \$60

In this workshop we will be exploring concepts, experiences, and patterns that lead us to understand how we developed our "Core Belief System." This will include how the brain installs a belief, particularly a set of beliefs that we call "Core Beliefs," how to alter them and how to replace destructive beliefs with more creative, healthy beliefs that will bring us energy and fulfillment.

We will experience the process of finding how our belief system establishes much of our theology and how we see God working in our lives and in the world in which we live.

We will explore how a belief becomes a huge neuro-sorting process through which our experiences are filtered.

Facilitator:

Dr. John S. Savage is an author, former pastor, trainer, and consultant. He received his M.Div. and D.Min. degrees from the Colgate-Rochester Divinity School. Having spent 26 years as a pastor in a local parish, he brings his experiences to his presentations, making them practical and productive.

# ALWAYS WE BEGIN AGAIN

by Sandra Kerka

The Spirit plants seeds in secret and we become aware of them when a persistent tickling and nagging draws our attention. For Judy Smoot, a seed planted several years ago has now sprouted into Always We Begin Again (AWBA), a new ministry focused on spiritual care for people with chronic disease and those who support them, in partnership with the Spirituality Network. Having served as a caregiver for relatives and friends with chronic disease, Judy was captivated by a 2004 article in *Presence* journal by Sister Bridget Haase, coordinator of the Wellness/Spirituality Program at The Boston Home, a residence for people with degenerative neurological diseases. About to graduate from Wellstreams, Judy heard Sr. Bridget's call for more spiritual directors to serve people on the margins, for whom many spiritual practices are inaccessible. When an opportunity to visit The Boston Home arose, Judy was able to observe the way Sr. Bridget worked with the residents. She returned home fired with the ambition to do something similar and began to formulate a ministry plan. But life got in the way and the seed went dormant.

*I know God has called me to be a compassionate presence for people who are struggling.*  
~Judy Smoot

In 2010, as she continued to walk with those with chronic disease, Judy kept hearing the message that something was growing and needed to be brought to birth. But just as the wheat must fall and die for there to be new life, Judy had to relinquish a staff position at her church that she had held for 15 years. Once she let go, an abundance of people and resources appeared, including an advisory board, a programming team, and the Network's partnership as fiscal agent. As a Benedictine Oblate, Judy found the apt title for her ministry in the Rule of St. Benedict.

AWBA's initial offering is an 8-week online retreat in July-September of this year. "We decided to start with this because the online aspect makes it easily accessible to people regardless of where they live or what challenges they face in attending a weekly class," says Judy. Planned next is a six-session prayer experience for caregivers this fall in Columbus and a workshop on money issues presented by a financial advisor, which will incorporate an interactive website. Among the other seeds germinating are an overnight retreat in May 2012 and future workshops involving creativity, equine therapy, and other topics.

AWBA services include referrals to spiritual directors, retreats, workshops, and share groups in addition to Internet-based coursework and retreat experiences. Judy views spiritual direction for this population as no different than sitting with other directees: Directors must focus on listening rather than "fixing" and be patient and creative in suggesting experiences or practices. "We're not looking to fix anybody's life; we're offering support, tools, information, and community," while recognizing that each person's diagnosis and circumstances are unique. AWBA's definition of chronic illness is intentionally broad. "If a condition has an impact on your life, if it's a boulder you can't get around..." is how Judy sees it. "I want the care to be that deep, the compassion that authentic," that people would recognize that AWBA is appropriate for them.

Judy envisions two outcomes in particular for AWBA participants. One is a sense of *hope*, by connecting isolated individuals with others struggling with daily challenges and spiritual questions as well as the discomfort of people and institutions at a loss to help them. The other outcome is *perseverance*—strength for a journey filled with good days and bad days, rising and falling. The very name AWBA implies hopefulness and is rooted in Benedictine spirituality—daily life lived with ever-deepening awareness of God regardless of circumstances, as well as Benedictine hospitality—every person is welcomed as the face of Christ with dignity and purpose.

Although her seedlings are just beginning to grow, Judy dreams of a bigger garden. "People with chronic disease have their doctor's office, the hospital, the lab, which take care of their physical needs." Her dream is for a facility that would serve as a meeting space/sanctuary, where those with chronic disease and caregivers can feel at home, where the coffee is always on, someone is there to listen, a place where they do not need to be defined by the disease.

*continued on p.7*

To keep the dream growing, Judy invites anyone reading this to participate:

- Refer to AWBA anyone with chronic, limiting conditions or diseases, as well as caregivers.
- Spiritual directors can join the referral bank to work with AWBA participants or offer ideas and input from their experiences working with directees with these conditions.
- Spiritual directors and other professionals can offer workshops, perhaps adapting something they already have to the needs of this audience.
- Tax-deductible financial contributions can be made through the Spirituality Network to help keep participant costs manageable. (The Network now accepts credit cards.)
- Assistance with technology/social media would be welcome.

"If something in this stirs your soul, call me," Judy says. "Something may bubble up, lead to new ideas or programs." Seeds scattered and sown....

Always We Begin Again...

Judy Smoot, Director

P.O. Box 1271

Westerville, OH 43086

614/891-6044

e-mail: judysmoot4awba@aol.com

## FROM THE EXECUTIVE DIRECTOR



Patricia J. Gibboney, CFRE

The Spirituality Network is celebrating its 25th anniversary and we began the celebration with our annual meeting on June 23. This is the year to reflect on our past accomplishments and to develop a plan for the future. This is the year to *Celebrate Our Contemplative Roots*.

The story of The Spirituality Network has been captured beautifully in the book, *Drawn to the Living Water*. This book, which was written in conjunction with the 20th anniversary of the organization, took a look back at its history. Now, 5 years later, the Spirit continues to guide us in our mission to serve those who "thirst for the God of Life." We have played an integral role in enriching the spiritual journey of hundreds of individuals.

During the past 25 years we have been blessed with the gifts of many people. We have been able to fulfill our mission with the resources provided by our donors and volunteers. With the dedication, passion, and vision of the those who have served on the Board of Directors, we have met the challenges and sought out the opportunities. With the selfless commitment of all past and current employees, the Network has thrived beyond the original dream. For those who were involved in the early years and for those who continue to be involved or are new to the Network, we have much to be proud of.

This 25th year is certainly an important milestone for the organization. We will be celebrating in many different ways and we will keep you informed so that you can join us along this journey. Let us know if there is a way that you would like to be involved.

## WINGS AND PRAYERS QUILT MINISTRY

A memorial service was held at Odyssey Hospice in June for Wanda Owens, the hospice patient who inspired Mary Ellen George to begin this ministry to make quilts for hospice patients. Members of Wanda's family, Odyssey staff, and representatives of the Spirituality Network attended the service and tied completed quilts.

The ministry is doing so well it has outgrown the Network office. First Congregational Church has graciously provided space in the education wing for quilt meetings on the first Saturday of each month. If you would like to become involved, e-mail [kmgeorge@wowway.com](mailto:kmgeorge@wowway.com) or call 614/878-1920.



*The Owens family ties a lap quilt made by Wings and Prayers.*



*Father Vinny McKiernan, CSP, was the guest speaker and recipient of the Presidential Award at the 20th Annual Living Faith Awards breakfast on May 19, 2011. Among those representing the Spirituality Network were past board chairs Katherine Murphy Mertzluft and Sharon Reed and current board member Sister Maxine Shonk, in the photo, left, with Father Vinny.*



*above: new Board member Elizabeth Bartley and Loretta Farmer contribute their "seeds" for the future of the Network*

*right: with assistance from Amanda Cushing, Mary Ellen George unveils the quilt she made to commemorate the 25th anniversary of the Spirituality Network*

## ANNUAL CELEBRATION 2011



# DEVELOPMENT REPORT

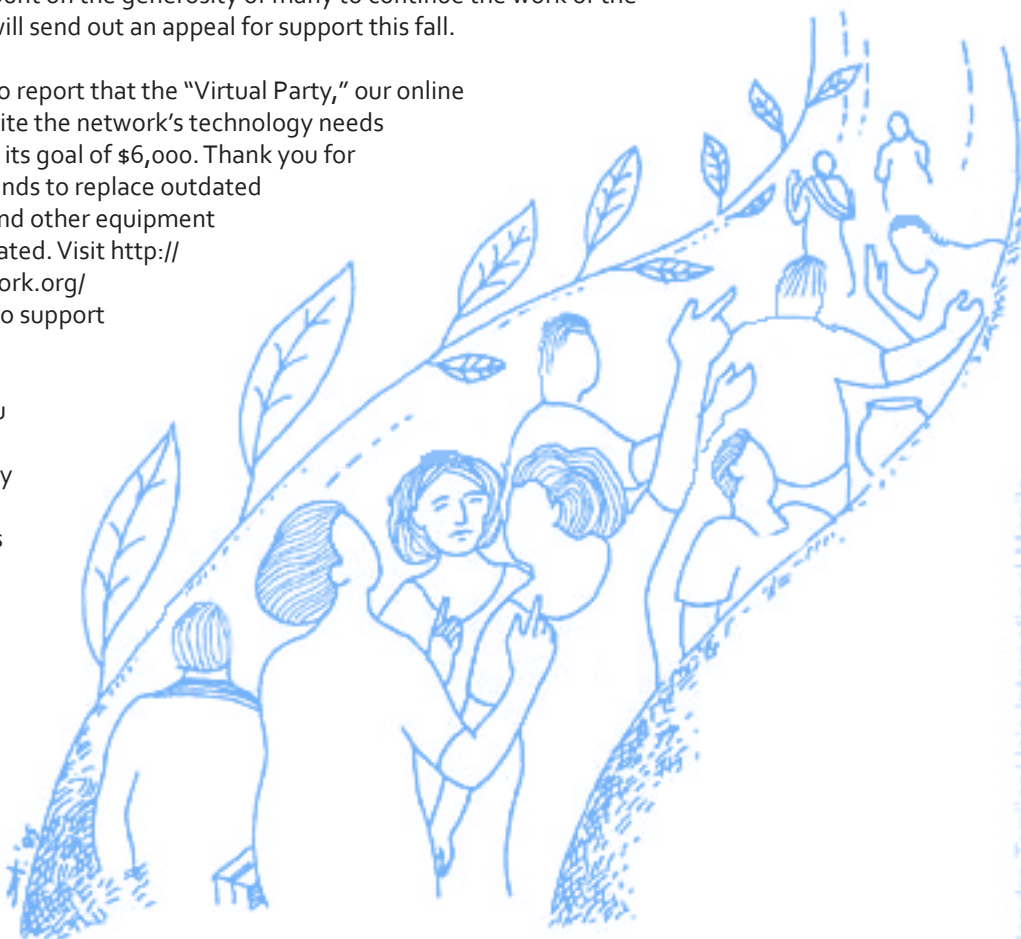
by Rebecca Bass, Development Committee Chair

As the Spirituality Network enters its 25th year, we look ahead with hopeful anticipation. In these challenging economic times, we continue to trust in God's providential care as we also do all we can to be good stewards of the gifts entrusted to us. This past year, many of you supported the Spirituality Network with generous donations of time, talent, treasure, and most of all your prayers. We are immensely grateful for these many forms of support.

In the coming year, the Network will continue to attend to our stewardship needs. We invite you to respond generously to our Circle of Friends and Annual Fund solicitation this fall. The Circle of Friends invites you to support the Network through recurring gifts, via pledge or credit card, on an annual, quarterly, or monthly basis. Recurring gifts provide the Network with a stable level of funding over an extended period of time. These recurring gifts and one-time annual gifts comprise an important part of our annual budget. Clearly, we count on the generosity of many to continue the work of the Network. The board will send out an appeal for support this fall.

We are also pleased to report that the "Virtual Party," our online fundraiser to underwrite the network's technology needs has reached \$3,500 of its goal of \$6,000. Thank you for helping us raise the funds to replace outdated computers, printers and other equipment which are sorely outdated. Visit <http://www.spiritualitynetwork.org/SNVirtualParty.html> to support this campaign.

Once more, thank you for believing in the work of the Spirituality Network and for your trust in us as stewards of your many gifts. Blessing upon blessing for the year ahead.



Sandra Torrijos/ Isis International Manila

# COMMUNITY EVENTS



---

## C. G. JUNG ASSOCIATION OF CENTRAL OHIO

Jung Haus, 59 W Third Ave; 614/291-8050, JungACO@JungCentralOhio.org, www.JungCentralOhio.org. Call or e-mail for information and/or to register for these programs.

*2011 Bollingen Lecture: What Shapes a Life: Archetypal Influences and Transcendence*, October 7-8, First Community Church, 1320 Cambridge Blvd. Presenter: Michael Conforti.

*2nd Saturday Coffee and Conversation*, 10am-12pm, free, donations appreciated. *September 10*: Introducing Michael Conforti, 2011 Bollingen Lecturer. Facilitator: Michael Bauza. *November 12*: Giving Phaedra Some Air. Facilitator: Mary Marx.

---

## MARTIN DE PORRES CENTER

2330 Airport Dr, Columbus; registration/information: 614/416-1910, martindepordes@oppeace.org, www.martindepordescenter.net

*Reclaiming Beauty for the Good of the World: Muslim & Christian Creativity as Moral Power*, October 25, 7-9pm. Presenters George Dardess and Peggy Rosenthal will invite participants to imagine and discuss how Muslim-Christian dialogue would change if, through it, God's beauty became source and goal not only for the making of beautiful art, but also for the leading of beautiful lives. Members of the Muslim community are invited to join in dialogue. Suggested donation: \$10. Register by October 24.

*St. Martin de Porres Feast Day Celebration: A Journey into the Heart of St. Martin de Porres*, November 6, 2-3:30pm. Presenter Brian J. Pierce, OP, will explore the life of this remarkable 16th century African-Latino saint, in order to discover what he might have to teach us in these times in which interracial, interreligious, and interpersonal relations are so important. Free and open to the public. Register by November 2.

*Special Musical Holiday Offering: Mary, the Eternal Materna*, December 11, 2-3:30pm. A dramatic cantata for two voices by Teresa Tedder that celebrates the life of the Blessed Virgin Mary. Concurrent art exhibit, "Images of Mary—Encounters in Faith." Free will offering will be taken. Register by December 8.

---

## STS. PETER & PAUL RETREAT CENTER

2734 Seminary Rd, Newark; 740/928-4246; e-mail: info@stspeterandpaulretreatcenter.org; www.stspeterandpaulretreatcenter.org

*Advent Morning of Reflection*, December 3, 9am-12pm, \$10. Continental breakfast followed by a reflective morning with Sr. Janice Bachman, OP.

---

## OHIO DOMINICAN UNIVERSITY CENTER FOR DOMINICAN STUDIES

Colonial Room, Sansbury Hall, 1216 Sunbury Rd, Columbus; 614/251-4722, <http://www.ohiodominican.edu/About-ODU/Mission/Center-for-Dominican-Studies/>. *Registration is required for all events*: Complete the online RSVP form to reserve.

*Seminar: Interreligious Dialogue*, September 6, 13, 20, 27, October 11, 18, 6-8pm. Scott Steinkerchner, OP, Associate Director, Center for Dominican Studies. Certificate and/or CEUs possible. \$100 includes book.

*Technology and Transformation Series: How We Use and Are Used by Technology*, September 8, October 6, November 10, 3:30-5pm. Herb Peterson, M.F.A. Scott Steinkerchner, OP, Ph.D., Tim Walker, Ph.D. Location TBA.

---

*Transforming Lives through Faith, Ethics and Social Concerns:*

*Founders Day 100th Anniversary*, October 5, 8:30-10:30am, *Brunch*, Catherine of Siena Room; 11am, *Mass*, Christ the King Chapel; 7pm, *Concert: Transforming Lives through Scripture and Song*, Jim Marchionda, OP and members of the ODU family.

*Life of the Mind Lecture—Contemplative Prayer: Source of Transformation*, November 3, 7pm. Brian Pierce, OP, Promoter of the Nuns for the Order of Preachers. Colonial Room.

*Albert the Great Lecture: Celebrating Science*, November 15, 11am-12:20pm. Lisa Zuccarelli, OP, PhD. Matesich Theatre.

*Special Public Lecture: The Future Church*, November 29, 7pm. John Allen, columnist for *National Catholic Reporter*. Matesich Theatre.

*Panel Discussion on "The Good Society,"* December 1, 3:30-5pm. Culmination of a student paper contest about what makes a good society. Colonial Room.

---

## ST. FRANCIS SPIRITUALITY CENTER

200 St. Francis Ave, Tiffin; 419/443-1485, peace@franciscanretreats.org, franciscanretreats.org/

*Franciscan Guided Retreat*, September 18-24, Sun evening-Sat noon. Directors: Patricia Ann Froning, OSF, Linda Haas, Roberta Marie Doneth, OSF. Donation: \$450; commuter: \$300 (includes noon meal).

*Contagious Joy*, October 7-8, Friday 7pm-Saturday 4pm. Facilitator: Patti Irons. Donation: \$100 or bring a friend, \$90 each; commuter: \$65. This retreat will help us to "infect" our family and friends with joy.

*Nonviolent Compassionate Communication*, September 30, 6:30-8:30pm; October 1, 9:30am-4:45pm. Facilitator: Jeff Brown, Director, Compassionate Communication of Central Ohio. Donation: \$30. An opportunity to learn and practice nonviolent communication skills. CEUs may be available.

---

## COMPASSIONATE COMMUNICATION OF CENTRAL OHIO

2350 Indianola Ave, Columbus; 614/558-1141; jeff@nvcoho.org; www.nvcoho.org

*The Power of Deep Listening: A Compassionate Communication Primer on the Impact of Empathy on*

*Our Relationships*, October 21, 6:30-9:30pm; October 22, 10am-6pm, Martin de Porres Center, 2330 Airport Dr. An experiential, meaningful, and fun exploration of deep listening and the beneficial impact it has on relationships. Beginner and intermediate tracks.

*Creating Workplaces Where People Thrive: Using Compassionate Communication in Businesses and Nonprofit Organizations*, December 8-10, 9am-5pm. Come for 1, 2, or all 3 days. Facilitator: Gregg Kendrick. Goodwill Columbus, 1331 Edgehill Rd. An introduction to Needs-Based Communication (Nonviolent Communication) and Dynamic Governance for anyone interested in transforming their workplace or organizational culture.

---

#### FIRST COMMUNITY CHURCH

North Campus, 3777 Dublin Rd, South Campus, 1320 Cambridge Blvd; 614/488-0681 ext 226, njones@fcchurch.com, www.fcchurch.com

*Fall Spiritual Searcher: The Birth of the Diamond Soul: Reincarnation, the planetary crisis, and the future human*, November 18-19, Dr. Christopher Bache. Friday lecture, Saturday workshop.

*Fall Adult Learning Initiative: Discovering Islam*, Tuesday evenings, September 13-October 4, various times and locations. This series created by the Abrahamic Faiths Initiative group of the Adult Learning Council is an initial attempt to bring Muslims and Christians back into relationship with more understanding about the faith and traditions of Islam.

---

#### OUR LADY OF THE PINES RETREAT CENTER

1250 Tiffin St., Fremont; 419/332-6522; e-mail: olprc@pinesretreat.org; www.pinesretreat.org. Call or e-mail to register.

*Directed Retreat*, September 17-23, (Saturday, 5:30pm, to Friday, 10am).

\$410. With the assistance of a spiritual director, the retreatants are aided in noticing God's presence in their life. Scripture, nature, and other prayer resources allow retreatants to listen for God's activity in every day events. An environment of silence is an important part of this retreat. Directors: Sr. Janice Bachman, OP, Sr. Judy Cole, CSJ, Sr. Patricia Meyer, OSF, and Sr. Margaret Marszal, HM.

---

#### INTERFAITH ASSOCIATION OF CENTRAL OHIO

*19th Annual Main Event: Faith Perspectives on Becoming a Peacemaker in Our Community*, October 16, 12-3pm, University Plaza Hotel, 3110 Olentangy River Rd.; \$30 ticket/dinner reservation by Oct. 7. Online reservations via PayPal at iaco.org/events. Contact: 614/849-0290 or e-mail: iaco@iaco.org. Guest Speaker: Rev. Dr. Shanta Premawardhana, president of the Seminary Consortium for Urban Pastoral Education in Chicago.

---

## ONGOING GROUPS

---

#### CENTERING PRAYER

Led by Fr. Vinny McKiernan, CSP, at the Newman Center, 64 W Lane Ave, Columbus, Mondays 7-7:45pm and Tuesdays 12:15-1pm. 614/291-4674; e-mail: vinnycsp@yahoo.com.

---

#### TURNING LEAVES AND TEA LEAVES

Second Wednesdays, 2-3:15pm. Monthly book club facilitated by Marialein Anzenberger, OP, and Colleen Gallagher, OP. Martin de Porres Center, 2330 Airport Dr, Columbus; 614/416-1910; martindepordes@opeace.org; www.martindepordescenter.net.

---

#### BLUE HERON SANGHA

Tuesdays, 7:15-8:45pm. Martin de Porres Center, 2330 Airport Dr, Columbus. A mindfulness community in the tradition of Thich Nhat Hanh. Contact Sandy at scoen@columbus.rr.com.

---

#### THOMAS MERTON STUDY GROUP

Third Mondays, 6-8pm. Vespers in Motherhouse chapel, 2320 Airport Dr, and discussion of Merton readings, led by Merton scholar David Belcastro, PhD. Hosted by Martin de Porres Center, 614/416-1910.

---

#### INTERNATIONAL WOMEN'S WRITING GUILD

A network for the personal and professional empowerment of women through writing. Meetings free and open to all, for writing, reading, and gentle critiquing in a safe, supportive environment. Contact Jeanne Marlowe at jamarlowe@juno.com, 614/476-8802.

*September 17, October 15, November 5, 10am-12:30pm*; Columbus Public Library, 96 S Grant Ave, 3rd Fl. Board Room.

---

#### INTERFAITH ASSOCIATION OF CENTRAL OHIO SPIRITUAL SHARING GROUP

Contact Jeanne Marlowe, 614/476-8802; jamarlowe@juno.com. IACO represents eight major faith traditions—Baha'i, Buddhist, Christian, Hindu, Islam, Jain, Jewish, and Sikh; www.iaco.org.

*September 7, October 5, November 2, December 7, 12-1 pm*, Columbus Metropolitan Library, 96 S Grant Ave, 3rd fl board room.

The Spirituality Network is an ecumenical outreach addressing the “thirst for the God of Life.” Founded by Christians, our aspiration is to be a community of acceptance and inclusion. We seek to create hope, peace, and purpose in our community.

Our programs include:

- Wellstreams Ecumenical Program and Training
- Spiritual Direction Referrals
- Retreat Planning and Facilitation
- Continuing Education for Spiritual Directors and those in companioning ministry
- Women to Women Listening Ministry

To receive updates on Network and community events via e-mail, go to [spiritualitynetwork.org](http://spiritualitynetwork.org) and click on “Join our Google Group” box in the lower right corner.



*Candlelight: Illuminating the Art of Spiritual Direction* by Susan S. Phillips, PhD. Morehouse Publishing, 2008.

The ministry of spiritual direction is difficult to define. Most spiritual directors use metaphors (“midwife for the soul,” “companion for the journey,” “soul friend”) or descriptions that tell you what the ministry is not (not counseling, not indoctrination), simply because it is so difficult to articulate just what spiritual direction is. Phillips writes:

When I mention “spiritual direction” to some people, their faces react as though I have said “palm-reading” or “phrenology.” I, too, have struggled with the label ... [which often] has rendered me inarticulate. (p. 2)

Aptly subtitled, “Illuminating the Art of Spiritual Direction,” this book casts light on the subject, offering the reader so much more than an academic or theoretical description. By sharing the stories of nine of her directees, she brings us into the direction session, providing beautiful illustrations of what happens in and through the process over time. We witness each directee as they discover deeper meaning in their day-to-day experiences and become more aware of God’s presence throughout their lives. We move with them through joy and grief, doubt and discernment, longing and gratitude, self-doubt and acceptance. The process helps them discover ways to live their faith more freely and participate more fully in relationships with family, friends, and community. With each vignette, Phillips also shares her own thoughts and prayers in response to her directees, remaining faithful to her call to listen with God.

I recommend *Candlelight* for anyone who is interested in knowing more about the ministry of spiritual direction. Although it will be particularly helpful for those who are considering seeking a director for the first time and those who are discerning a call to the ministry themselves, even veteran directors will find inspiration and insight in this book.

*Recommended by Amanda Stone Cushing*

Learn what spiritual direction might do for you by signing up for our “Discovering the Sacred in the Ordinary: Directed Retreat for Busy People.” See page 2 for details.

### HELP THE NETWORK THROUGH AMAZON

When you shop for books, music, gifts, or gift cards remember to use our Amazon.com link, which returns a portion of the price to the Network. Bookmark the Amazon Purchase Program link at [www.spiritualitynetwork.org](http://www.spiritualitynetwork.org).